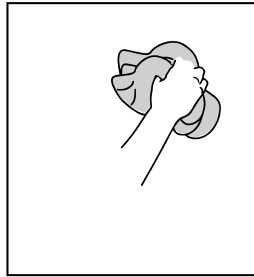


Please review these instruction carefully before proceeding.

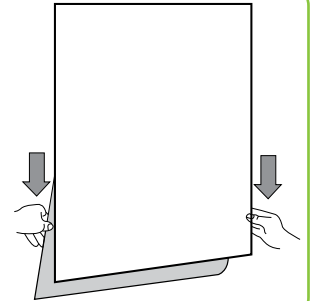
## 1

Wipe down the wall, removing all dust and excess particles. Ensure the wall is dry before installation.



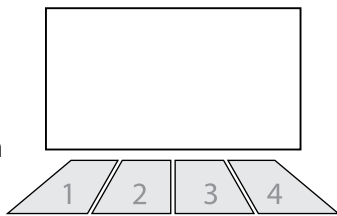
## 6

Pull the liner down as needed using two hands.



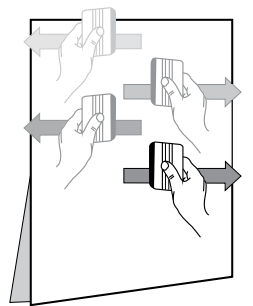
## 2

Lay each panel face up on the ground as shown. Each panel has been supplied with a 35mm bleed at the top and bottom as well as a 20mm overlap between each panel.



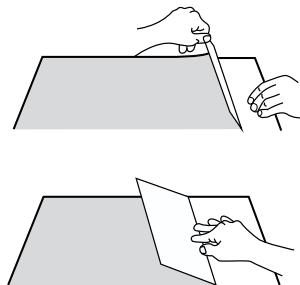
## 7

Continue to squeegee from left to right, pulling the liner down as needed. Repeat until the entire panel is installed.



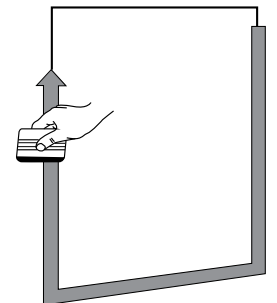
## 3

Always apply the graphic from left to right. Take the first panel, peel back the backing sheet approximately 30cm and sharply crease the liner.



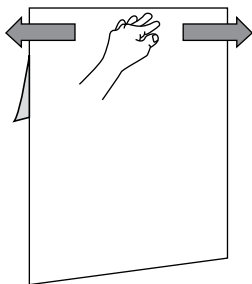
## 8

Re-squeegee the outer 10cm of the panel to ensure good adhesion before beginning to install the remainder panels.



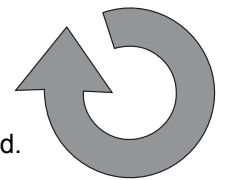
## 4

Align the panel on the wall and use finger pressure to tack in place.



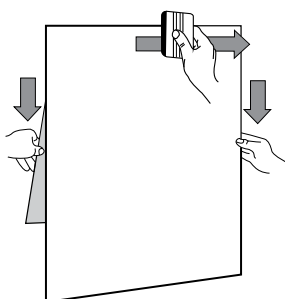
## 9

Repeat these steps for each panel until the entire wall mural is installed. Please note that each subsequent tile will overlap the previous tile by 20mm – the overlap will be marked with a small, vertical line at the top of each panel to assist with alignment.



## 5

Take the squeegee supplied and, using the felt tipped side, squeegee from the centre to the right edge. Return to the centre and squeegee to the left edge.



## 10

Trim the excess graphic from each panel (top and bottom) as needed.

