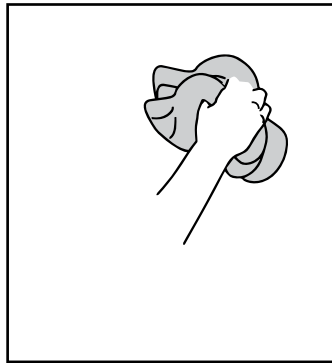


Please review these instruction carefully before proceeding.

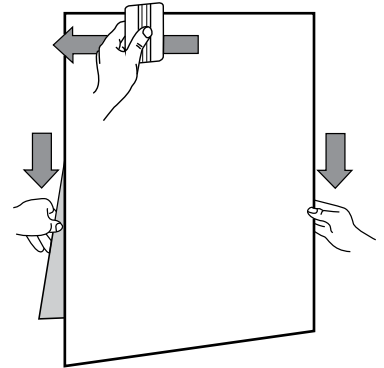
1

Wipe the wall, removing dust and any obvious contaminants.



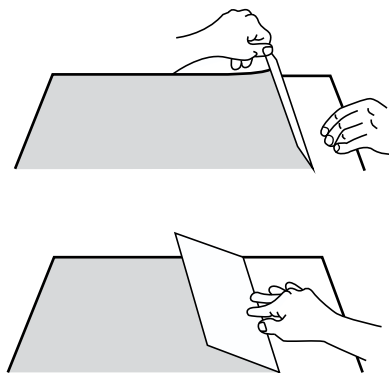
5

Return to the centre and squeegee to the left edge.



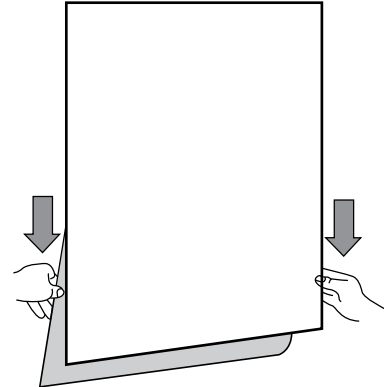
2

Lay the graphic image side down on a flat surface. Pull back about 6 inches of the liner. Sharply crease the liner.



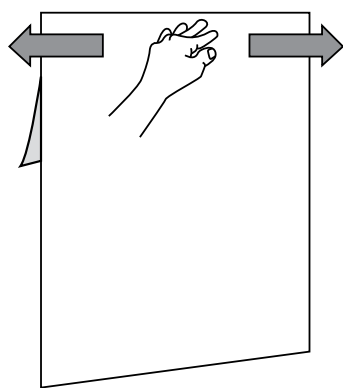
6

Pull the liner down as needed, using two hands.



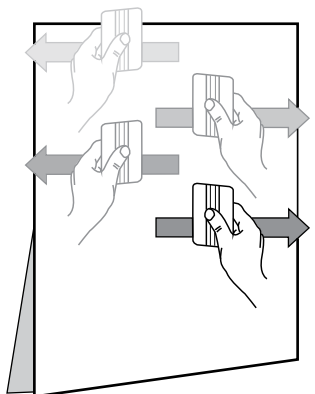
3

Align the graphic on the wall and use finger pressure to tack in place.



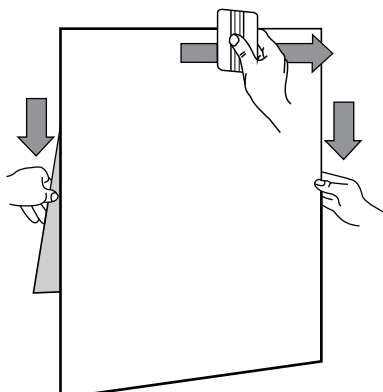
7

Continue to use the squeegee, stroking left and right, pulling the liner down as needed. Repeat to the bottom.



4

Squeegee from the centre to the right edge.



8

Re-squeegee the outer 3 inches of the entire graphic to ensure good edge adhesion.

